

INVISTA™ Specialty Intermediates

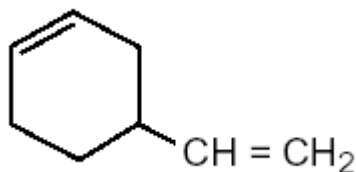
Vinylcyclohexene (VCH)

Product Description

A high purity, liquid diolefin useful as a monomer and chemical intermediate.

Applications

- Chemical intermediate for styrene, flame retardants, fragrances



- Polyolefins
- Solvents
- Specialty chemicals such as the diepoxide

Typical Composition, wt%

4-Vinylcyclohexene-1	97
1,5-Cyclooctadiene	3
Water, ppm	200
Inhibitor (t-butylcatechol), ppm	25–200

General Information

CAS Registry Number	100-40-3
Molecular Weight	108
Freezing Point, °C	-108
Boiling Point, °C	129
Vapor Pressure at 25°C, mm Hg	15
Specific Gravity at 25°C	0.826
Solubility in Water at 25°C	50 ppm
Flash Point, °C, Closed Cup	16

Storage and Handling

Shipping

DOT/IMO Shipping Name:	Flammable Liquid N.O.S. (4-Vinyl-1-Cyclohexene)
DOT Hazard Classification	3
IMO Hazard Classification	3.2
UN Number	1993
DOT/IMO Label	Flammable Liquid
Packing Group:	II

Packages

Drums, 55 gal steel	425 lb gross wt. 375 lb net wt.
Tank Trucks	40,000 lb

For Samples and Information:
INVISTA™ Specialty Intermediates • (800) 231-0998
World Wide Web address: www.intermediates.invista.com

This Product Data Sheet contains selected information about a specific INVISTA product, or group of products, and particular uses of the same. It relates only to the identified product and any identified uses, and is based on information available as of the date hereof. Additional information may be needed to evaluate other uses of the product, including use of the product in combination with any materials or in any processes other than those specifically referenced. Information provided herein with respect to any hazards that may be associated with the product is not meant to suggest that use of the product in a given application will necessarily result in any exposure or risk to workers or the general public. **THIS PRODUCT DATA SHEET DOES NOT CONTAIN A COMPLETE STATEMENT OF, AND DOES NOT CONSTITUTE A REPRESENTATION, WARRANTY OR GUARANTY WITH REGARD TO, A PRODUCT'S CHARACTERISTICS, USES, SUITABILITY, SAFETY, EFFICACY, HAZARDS OR HEALTH EFFECTS.** Purchasers and users of the product are responsible for determining that the product is suitable for the intended use and that their workers and the general public are advised of any risks resulting from such use. Nothing contained in this Product Data Sheet shall be construed to modify any of the commercial terms pursuant to which the product was sold by INVISTA including, but not limited to, terms and conditions addressing each party's respective rights and obligations with regard to warranties, remedies and indemnification. If purchasers and users believe or have reason to believe that the Product Data Sheet or other information provided to them by INVISTA is inaccurate or in any way insufficient for any purpose, they should immediately notify INVISTA of the same, and of the basis for their belief (for example, studies, data, reports of incidents, etc.) so that INVISTA can determine whether modification or supplementation of the Product Data Sheet, or other measures, are appropriate. Failure of purchasers and users to timely provide such notice shall be deemed a waiver by purchasers and users of any and all claims, demands or causes of action, including causes of action based on an alleged failure to warn, for personal injury or damage to the environment or property arising from or attributable to the use of product.

The INVISTA logo, INVISTA, C12 logo and C12 are trademarks or registered trademarks of INVISTA.

Copyright © 2005 INVISTA Inc. All rights reserved